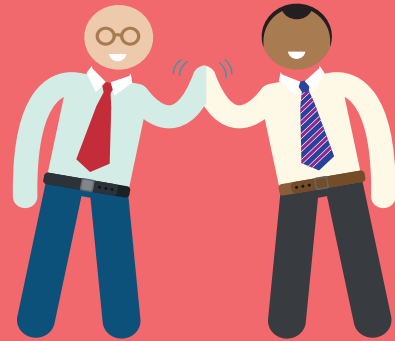


# Get the support you need



Many employees told us that they liked the flexibility of online learning but they sometimes found it hard to motivate themselves.

YourWay addresses this by combining online training with a dedicated progress coach plus a real-time digital dashboard.

Coaches can monitor your progress via the dashboard and if your employer is providing support for your training they can also see how you're progressing. Your progress coach will provide support throughout the course and stay in regular touch with you to make sure you complete the course.

## Key Features:

- ✓ Cutting-edge learning platform that recognises your existing experience and enables you to skip ahead
- ✓ Student loan eligibility to cover tuition costs
- ✓ Different subscription options to suit the way you want to structure your learning
- ✓ Accreditation from Chartered Management Institute (CMI)
- ✓ Work-related assessments that tailor learning to your role and your organisation's context
- ✓ Study at your own pace - anywhere, anytime
- ✓ Progress coach to ensure you stay on track and complete quickly

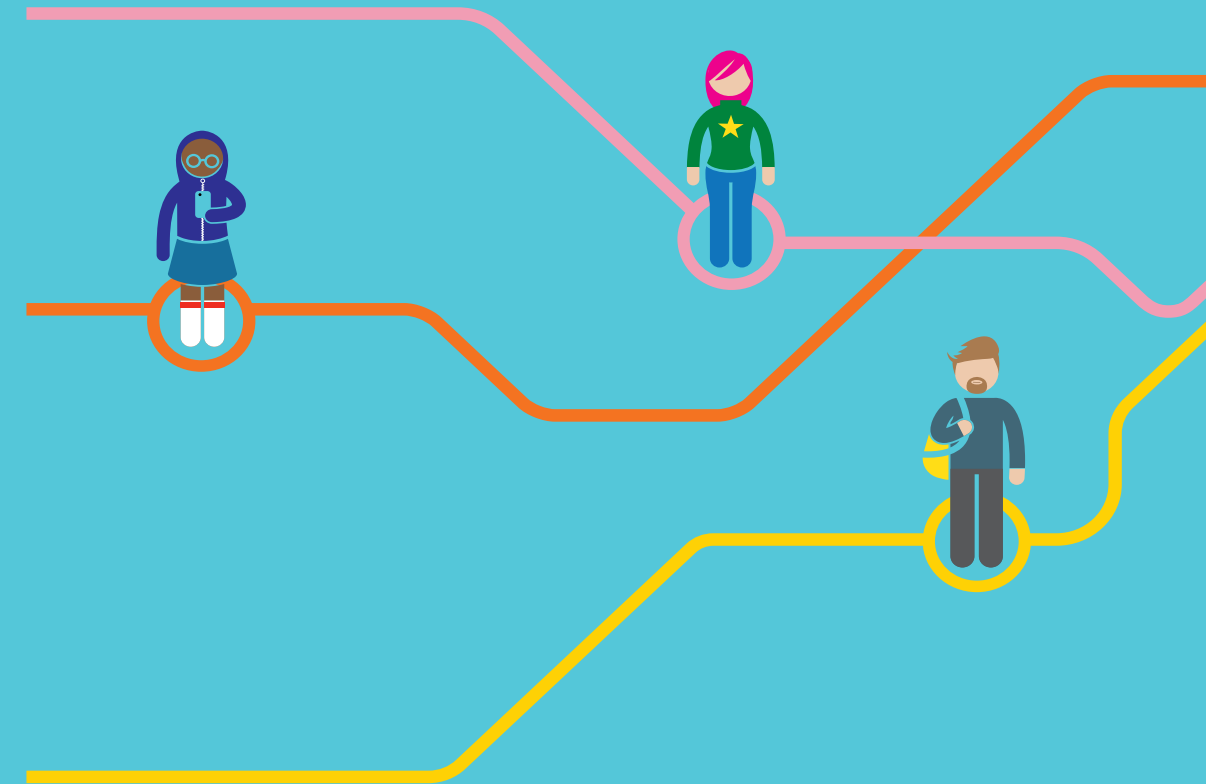
Interested?

To find out how YourWay can help to upskill your workforce, contact:

+44 (0)20 8591 9138  
info@londonpc.org.uk

**L P C** LONDON PROFESSIONAL COLLEGE

in collaboration with



**YourWay**  
Setting the pace for professional education

**YourWay**  
Setting the pace for professional education

## A new way to gain skills and enhance your career

YourWay has been designed to help you gain the skills you need to progress your career. It is the result of extensive collaboration between the University of East London, employers and professional bodies.

YourWay combines the best features of online learning with motivational coaching and a unique subscription based pricing model. And as the qualification you achieve is a Certificate of Higher Education you can apply for a Student Loan to cover the costs.



“More than three quarters of businesses (77%) expect to have more job openings for people with higher-level skills over the coming years

CBI/Pearson Education and Skills Survey 2016

You can choose to study independently or with the support of your employer to gain the skills you need to progress your career and develop your leadership and management skill set.

## Your Way qualifications

The award is designed with employers and delivered by UEL. It will equip you with the skills you need to progress your management career or to move into a management level position.

YourWay is considerably faster than other training solutions. It encourages you to focus on filling gaps in your knowledge and eliminates the need to spend time on concepts you have already mastered.

On successful completion, you will be awarded a Certificate of Higher Education from UEL in Management and Leadership (as well as the CMI Diploma Level 4).

A Certificate of Higher Education is equivalent to the completion of the first year of undergraduate bachelor's degree. You can use the credit gained to progress to study for a full degree at UEL or another university.

## Making the most of your time

YourWay is different to other online learning courses in that it is designed to maximise prior experience and learning. This means that it's possible to complete your assessments within six months whereas with some other providers it can take up to two years.

It's a flexible way for you to gain a Level 4 qualification that will enhance your employability. It will enable you to formalise your previous and current management experience; providing an opportunity for career development.

YourWay is designed to fit around your life. Juggling work and home life commitments can mean that fitting in study can be challenging. YourWay can be accessed at anytime and anywhere so long as you have access to an internet connection.